



MOD  
ERN  
ARCHI  
TECTURE  
WITH  
OUT  
THE  
COST

Box™



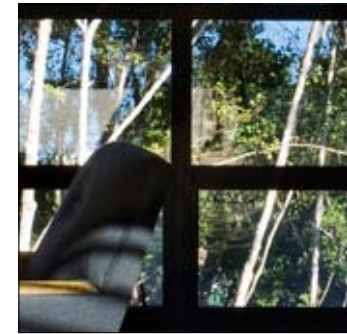
## KEY FEATURES//



**DESIGN//**  
BOX homes are characterised by their timeless modernist look.



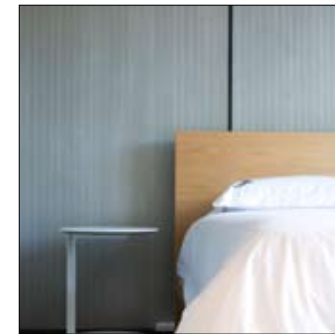
**PERSONAL//**  
All BOX homes are personalised to your choice of cladding, flooring, fixtures, fittings, bathroom, kitchen and lighting design.



**BOX LIVING** designs and builds outstanding architectural homes that don't cost the earth.

A **BOX** home is designed by an architect down to the last detail to fit your site, brief and orientation. Elegant, open plan and flexible spaces that can be changed and extended as your needs evolve.

**BOX** homes offer great value for money by using a tested and refined modular system. This substantially reduces architectural design costs and offers certainty of price and time to build.



**LITE and EFFICIENT//**  
Our design and build process is efficient. Our system reduces waste, uses local, renewable and recyclable components and materials and is designed for energy and water efficiency.

**SELF-SUFFICIENT//**  
We design and install water harvesting systems, wastewater systems and renewable energy solutions



## CHOOSE A BOX HOME THAT IS RIGHT FOR YOU

BOX LIVING offers three options to choose from. The right one for you depends on your site, budget and taste.

Each house is custom designed so prices and details vary but here are a few examples to give you an idea:

**BOX CLASSIC** is characterised by its exposed post and beam structure and an almost flat roof giving it a timeless modernist look. It allows ultimate flexibility for arranging the internal space and extending in the future.

- Solid post and beam frame with flat roof
- Suited to all sites, particularly sloping
- Warm roof system giving improved thermal performance and durability
- Can include eaves and covered decks
- Easily extendable
- Custom designed in modules of 0.6m
- Energy and water efficient
- Full architectural service

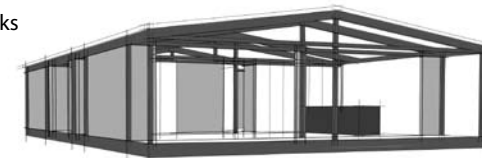
\$150,000: Single bedroom studio  
 \$255,000: 2 bedrooms/ large covered outside deck  
 \$330,000: 3 bedrooms/ decking areas  
 \$390,000: 3 bedrooms/ playroom/ 2-storey  
 \$500,000: 4 bedrooms/ double garage/ storage/ covered decks



**BOX PITCH** is the same as BOX CLASSIC but it has a pitched roof. This allows additional stud height and offers more conventional, clean elegant lines.

- Solid post and beam frame with pitched roof
- Suited to flatter sites
- Warm roof system giving improved thermal performance and durability
- Higher internal stud height possible
- Easily extendable
- Large covered deck
- Energy and water efficient
- Full architectural service

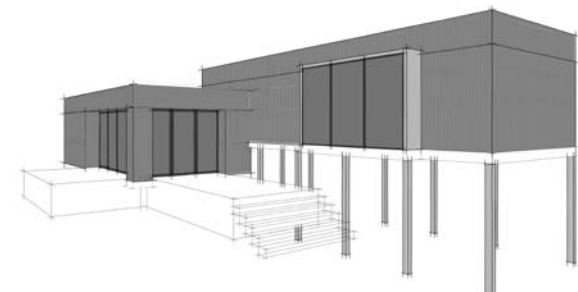
\$150,000: Single bedroom studio  
 \$255,000: 2 bedrooms/ large covered outside deck  
 \$330,000: 3 bedrooms/ decking areas  
 \$390,000: 3 bedrooms/ playroom/ 2-storey  
 \$500,000: 4 bedrooms/ double garage/ storage/ covered decks

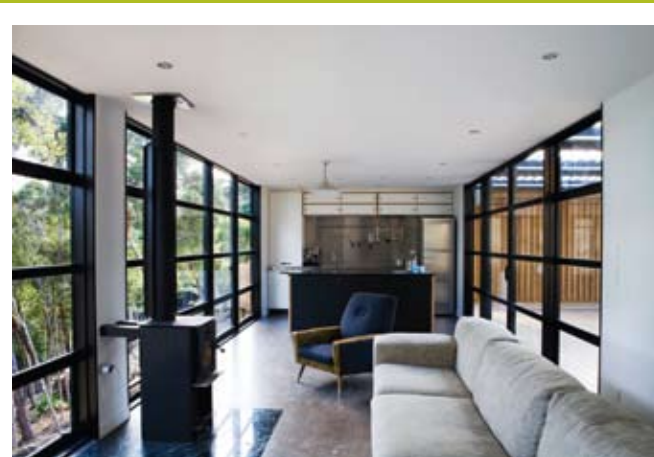


**BOX LITE** is the most cost effective option and the lightest of the box range. Rather than a post and beam structure, it offers a more traditional look with a timber frame.

- Cost-effective build option
- Traditional timber frame
- Insulated low-pitch metal long-run roof
- Can be adapted to sloping sites
- Easily extendable
- Easy to add window seats and covered recesses
- Energy and water efficient
- Full architectural service

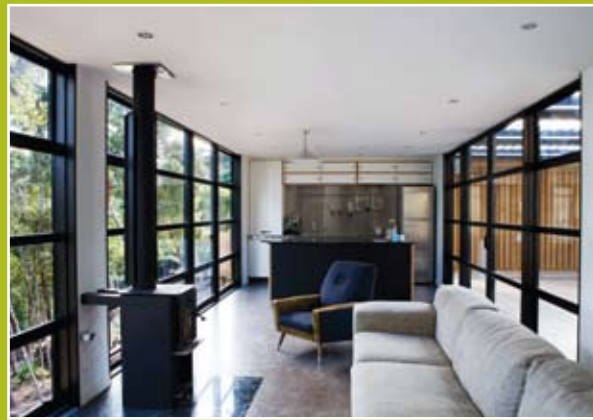
\$100,000: Single bedroom studio  
 \$200,000: 2 bedroom, 1 bathroom, garage  
 \$280,000: 3 bedrooms, 2 bathroom, double garage  
 \$320,000: 4 bedroom, 2 bathroom, double garage





## CONTACT

[WWW.BOXLIVING.CO.NZ](http://WWW.BOXLIVING.CO.NZ)  
[INFO@BOXLIVING.CO.NZ](mailto:INFO@BOXLIVING.CO.NZ)  
0800 717 717



## CONTACT

[WWW.BOXLIVING.CO.NZ](http://WWW.BOXLIVING.CO.NZ)  
[INFO@BOXLIVING.CO.NZ](mailto:INFO@BOXLIVING.CO.NZ)  
0800 717 717